

Product Information

Grips for screws/bolts and button-head and threaded-end specimens

CTA: 145835 145834



Z600E with grips for screws/bolts and button-head and threaded-end specimens



1200kN specimen grips with makroXtens extensometer on machined screw

Range of application

These specimen grips are designed for tests on button-head and threaded-end specimens and for testing nuts and bolts/screws.

Specimen holders are currently available for the following specimens and standards:

- threads as per DIN 50125 Type B and ISO 6892-1
- screws/bolts/studs as per ISO 898-1 (straight tensile test and oblique tensile test)
- dumbbell specimens as per DIN 50125, Type C
- nuts as per ISO 898-2.

Specimen holders for additional standards (e.g. ASTM E8) are available on application.

Design and handling

The specimen plus appropriate holder is inserted into the grips, which are freely accessible from the front, and centered.

Advantages and features

- Various design details ensure that force distribution is absolutely symmetrical:
 - symmetrical contact surfaces in the specimen grips: the specimen holders bear on two symmetrical contact surfaces in the specimen grips;
 - holders enclose specimen: all specimen holders completely enclose the specimen; a support sleeve is located around the split dumbbell-specimen holders, additionally preventing them from spreading.
- Specimen-holder recoil at specimen break absorbed by dampers.
- Purely mechanical solution: no pneumatic control unit or hydraulic power pack required.
- Specimen holders for the 250kN grips can also be used in the 600kN grips.
- Adapter plates for attaching additional test fixtures to the grips can be supplied.

Product Information

Grips for screws/bolts and button-head and threaded-end specimens

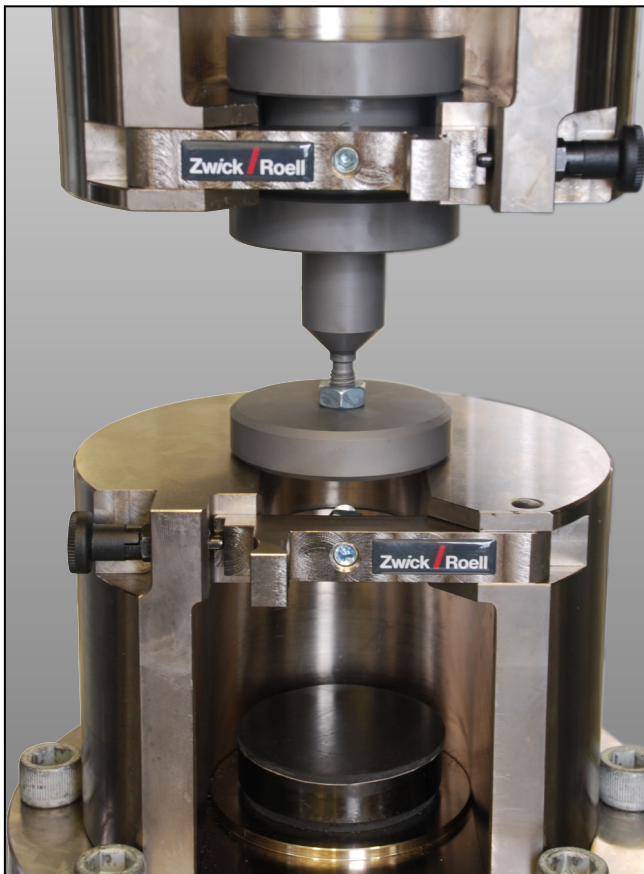
Technical data

Max. test load	400 kN	600 kN	1200 kN	
Item No.	1082736	3002330	3002734	
Overall height (1 grip unit, no inserts)	222	187	241	mm
Diameter (grip body)	160	195	310	mm
Weight per piece	38	38	130	kg
Scope of delivery	2	2	2	pieces
Mounting options	load cell, crosshead, hydraulic grips	load cell, crosshead, hydraulic grips	load cell, crosshead	

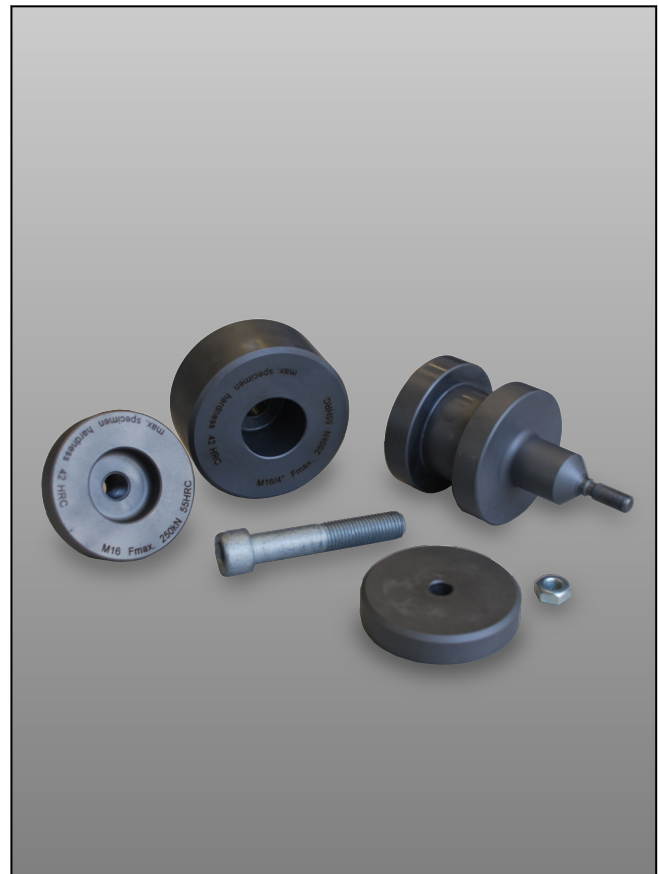
Testing nuts

For tensile and compression tests on nuts to ISO 898-2 a mandrel and a die are required for each thread size.

CTA: 145856 145855



600kN specimen grips with mandrel and die



600kN specimen holders